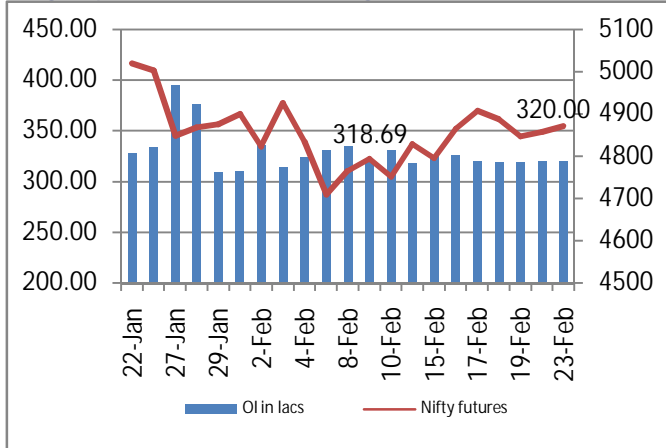
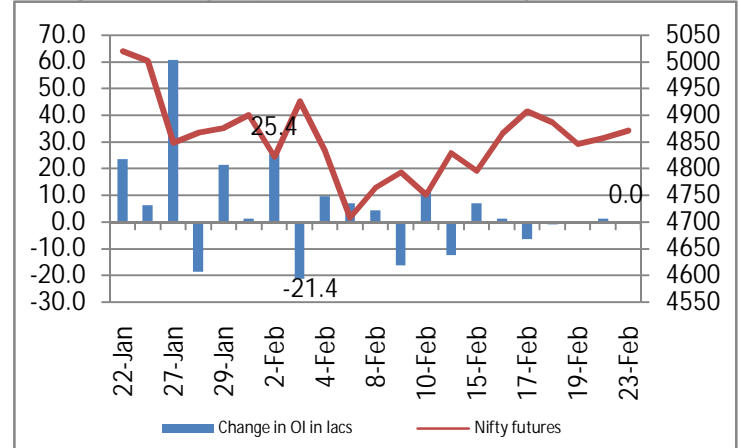


NIFTY FUTURE & OPEN INTEREST MOVEMENT ANALYSIS

Nifty Open Interest & Nifty future

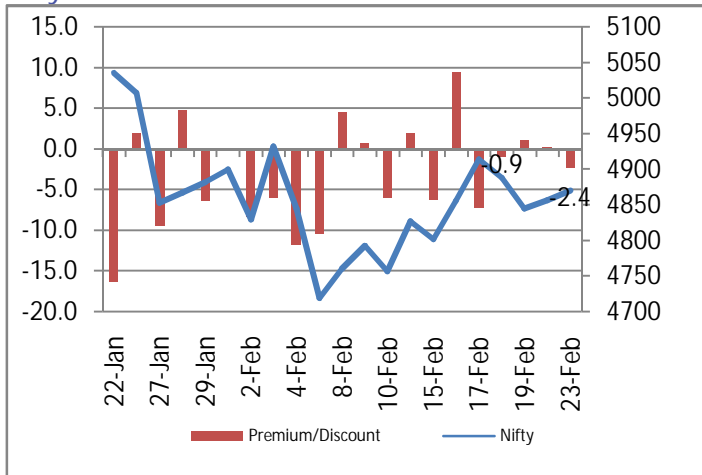


Change in Nifty Open Interest & Nifty future

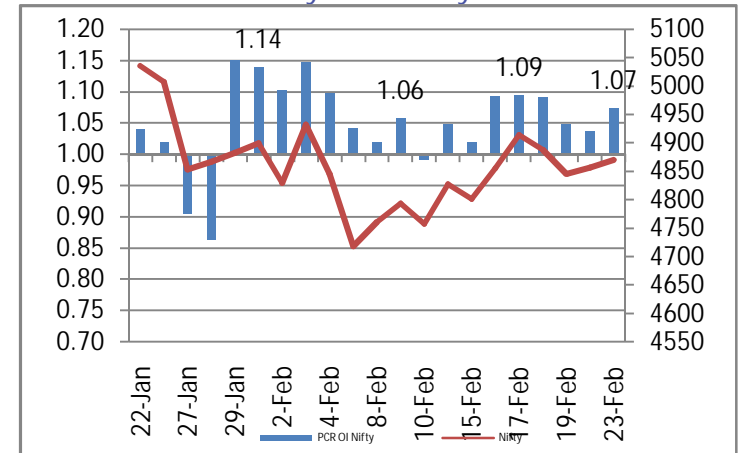


- On Tuesday the Nifty opened above the 4850 level, trading in a narrow range between 4860-80 finally closing up 13.65 points at 4870.05.
- Nifty open interest remained unchanged at 320 lakhs & we continue to witness subdued activity on the OI in the last few sessions

Nifty Future Premium / Discount



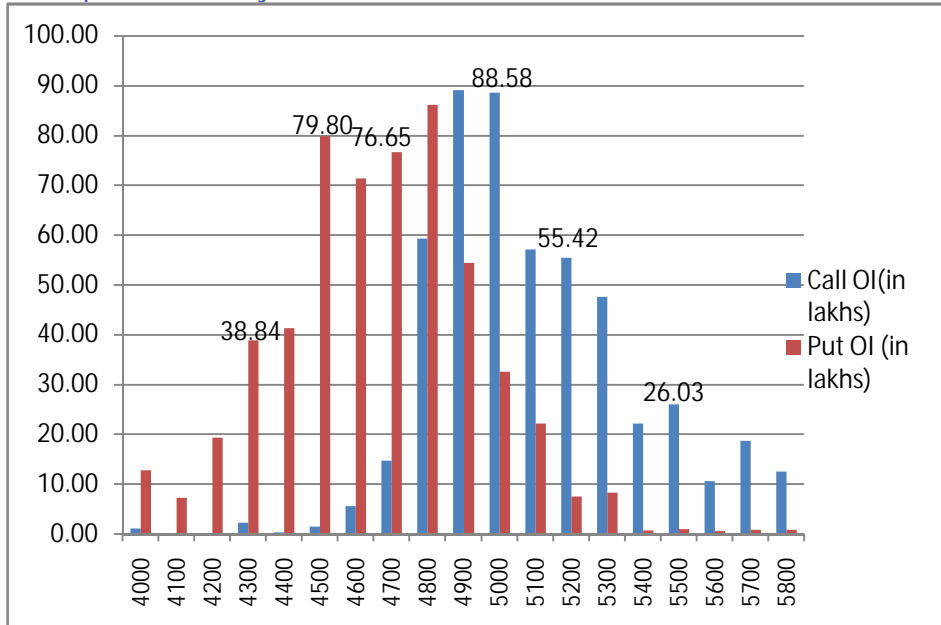
Put Call Ratio of Nifty OI & Nifty Future



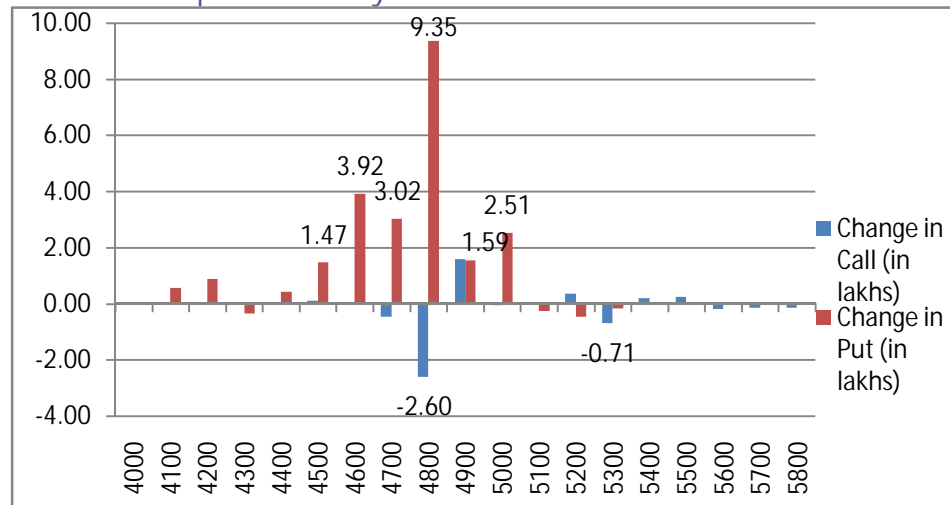
- The Nifty March futures closed at a 2.4 point discount at 4867.7 points.
- Put Call Ratio of OI for nifty increased from 1.04 to 1.07 mainly due to the addition seen on the put side.

NIFTY PUT CALL ANALYSIS

OI in various strike price of Nifty



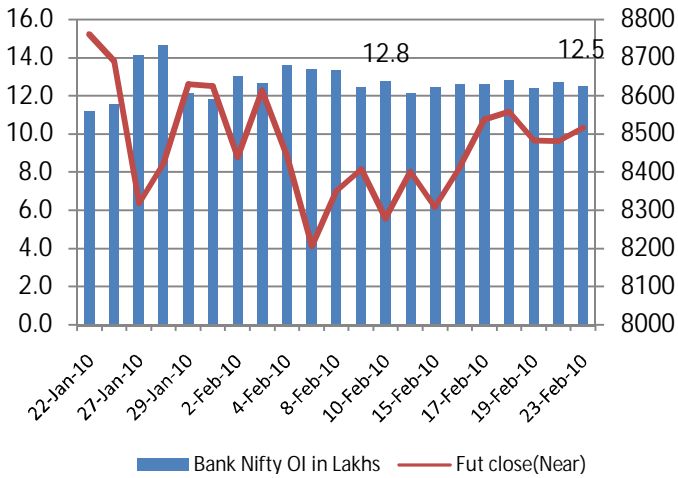
Change OI in various strike price of Nifty



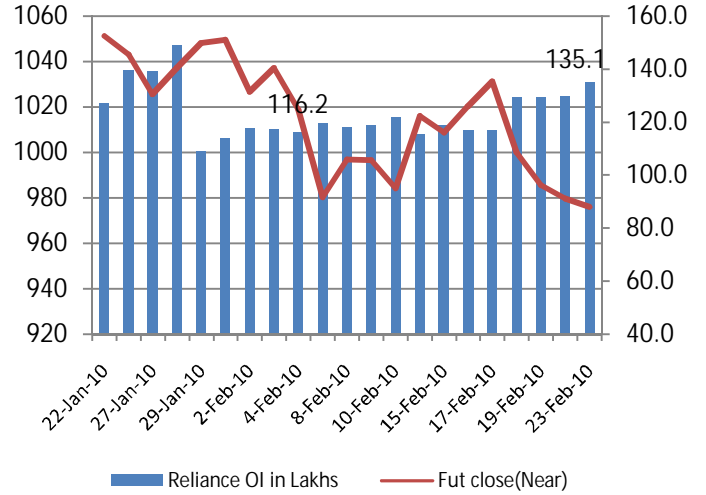
- On Tuesday we saw a net reduction of 1.63 lakhs with the 4800 call shedding 2.6 lakhs in OI.
- On the put side we saw an addition of 22.53 lakhs with addition seen on the 4800 put at 9.35 lakhs. The 4500, 4600 & 4700 put saw an addition of 1.47, 3.92, 3.02 lakhs respectively
- On Tuesday we saw the Nifty close higher by 0.28%. Over the past few sessions we have seen the Nifty trade in a tight range between the 4800-4950 levels. We expect it to continue to trade in a range till the Budget.

STOCK FUTURE & OPEN INTEREST MOVEMENT ANALYSIS

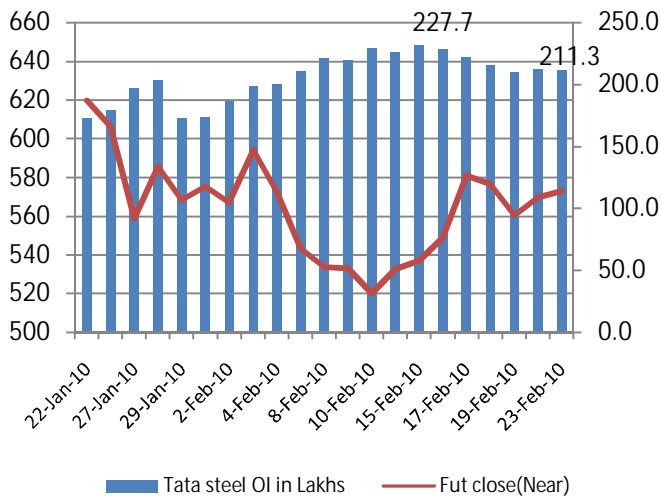
Bank Nifty Open Interest & Bank Nifty future



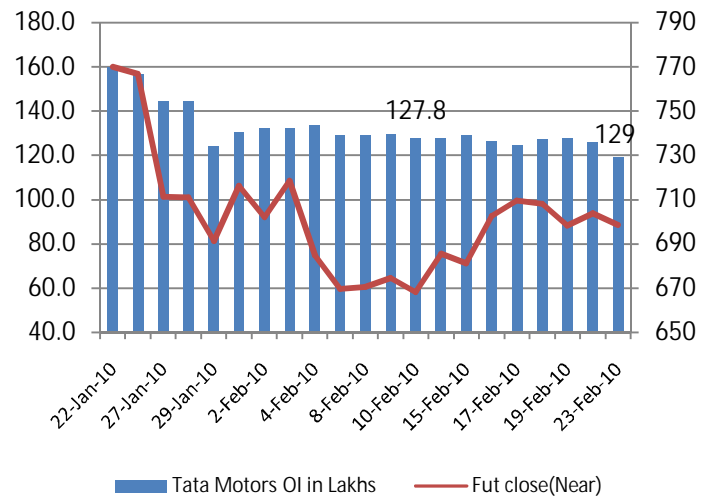
Reliance Open Interest & Reliance future



Tata Steel Open Interest & Tata Steel future



Tata Motors Open Interest & Tata Motors future



(Rs. in Cr) Date	FII Derivative				FII Cash
	Index Future	Index Option	Stock Future	Stock Option	
23-Feb-10	546	-581	273	-0.2	551
22-Feb-10	354	186	381	-9	-102
19-Feb-10	-603	-178	-229	-1	18
18-Feb-10	-350	167	134	2	-351
17-Feb-10	806	-284	263	-7	520

Top 10 FUTURE OPEN INTEREST UP AND PRICE UP

SYMBOL	FUTURE OI	PREVIOUS OI	% CHANGE	CLOSE	PREVIOUS CLOSE	PRICE INCREASE
GLAXO	53700	43500	23.4%	1702.80	1672.45	1.8%
GMRINFRA	55170000	46612500	18.4%	55.60	54.90	1.3%
UNIONBANK	2980950	2522100	18.2%	246.05	243.00	1.3%
BANKBARODA	2411500	2214800	8.9%	573.10	565.35	1.4%
HDIL	9603018	8979948	6.9%	295.55	294.20	0.5%
JSWSTEEL	3597996	3370984	6.7%	1047.05	1028.15	1.8%
TCS	4137000	3876000	6.7%	761.55	756.50	0.7%
NATIONALUM	2124625	1994100	6.5%	369.60	368.90	0.2%
HDFC	2073900	1947450	6.5%	2513.55	2479.70	1.4%
DRREDDY	954400	903200	5.7%	1142.80	1116.50	2.4%
RECLTD	19240650	11150100	72.6%	212.00	212.55	-0.3%
ADANIENT	178400	130000	37.2%	492.25	493.65	-0.3%
VIDEOIND	721650	541450	33.3%	220.35	226.70	-2.8%
AREVAT&D	162000	131250	23.4%	264.45	270.15	-2.1%
EDUCOMP	3528000	2896875	21.8%	683.45	721.35	-5.3%
GODREJIND	132600	109200	21.4%	148.75	151.00	-1.5%
APOLLOTYRE	931600	809200	15.1%	56.20	57.95	-3.0%
NTPC	28049125	25848875	8.5%	202.20	202.75	-0.3%
CUMMINSIND	160550	149150	7.6%	446.60	453.90	-1.6%
ONGC	1855125	1732275	7.1%	1104.05	1109.35	-0.5%

Rollover Analysis								
SYMBOL	Rollover	3M AVG	SYMBOL	Rollover	3M AVG	SYMBOL	Rollover	3M AVG
Nifty	34.91%	45.98%						
ABAN	54.87%	50.43%	CIPLA	32.74%	37.36%	HINDPETRO	41.10%	40.41%
ABB	52.55%	50.16%	COLPAL	8.42%	32.17%	HINDUNILVR	60.64%	67.89%
ABIRLANUVO	27.23%	43.97%	CONCOR	23.94%	19.13%	HINDZINC	35.50%	31.91%
ACC	27.24%	47.23%	CROMPGREAV	33.68%	31.34%	HOTELEELA	43.51%	33.80%
ADANIENT	86.10%	N/A	CUMMINSIND	24.85%	24.26%	IBREALEST	34.52%	30.63%
ALBK	25.52%	32.80%	DABUR	17.78%	22.63%	ICICIBANK	47.75%	54.92%
AMBUJACEM	23.64%	43.71%	DCHL	42.00%	22.30%	ICSA	32.48%	40.61%
ANDHRABANK	14.63%	27.54%	DENABANK	27.72%	35.03%	IDBI	33.91%	37.25%
APIL	24.83%	32.79%	DISHTV	26.30%	30.73%	IDEA	51.65%	53.06%
APOLLOTYRE	69.34%	N/A	DIVISLAB	32.96%	30.84%	IDFC	48.85%	42.77%
AREVAT&D	71.30%	N/A	DLF	46.31%	46.43%	IFCI	39.91%	38.58%
ASHOKLEY	39.56%	28.50%	DRREDDY	63.96%	41.14%	INDHOTEL	33.68%	52.98%
ASIANPAINT	16.05%	15.94%	EDUCOMP	55.24%	51.20%	INDIACEM	79.36%	65.61%
AUOPHARMA	62.45%	60.90%	EKC	34.80%	36.40%	INDIAINFO	52.82%	32.63%
AXISBANK	43.46%	44.84%	ESSAROIL	38.55%	36.10%	INDIANB	32.52%	32.46%
BAJAJ-AUTO	28.71%	29.86%	FEDERALBNK	19.51%	32.89%	INFOSYSTCH	39.19%	51.54%
BAJAJHIND	45.61%	41.50%	FINANTECH	27.02%	31.64%	IOB	27.74%	27.08%
BALRAMCHIN	49.99%	38.44%	FORTIS	58.55%	N/A	IOC	51.06%	41.73%
BANKBARODA	27.61%	38.25%	FSL	37.13%	40.38%	ISPATIND	44.26%	38.92%
BANKINDIA	30.57%	35.42%	GAIL	33.16%	39.94%	ITC	30.17%	38.09%
BEL	30.04%	34.14%	GESHIP	26.10%	28.18%	IVRCLINFRA	39.37%	41.35%
BEML	25.50%	33.85%	GLAXO	42.13%	70.25%	JINDALSAW	44.62%	42.91%
BGREENERGY	77.78%	N/A	GMRINFRA	50.18%	52.67%	JINDALSTEL	31.80%	34.12%
BHARATFORG	53.84%	49.24%	GODREJIND	73.53%	N/A	JISLJALEQS	47.96%	N/A
BHARTIARTL	51.81%	56.75%	GRASIM	47.71%	47.93%	JPASSOCIAT	41.46%	39.15%
BHEL	59.16%	60.33%	GSPL	36.10%	35.49%	JPOWER	48.16%	40.93%
BHUSANSTL	29.79%	23.80%	GTL	93.71%	86.15%	JSWSTEEL	38.14%	36.17%
BIOCON	34.13%	34.42%	GTLINFRA	63.27%	57.84%	KFA	38.73%	38.60%
BOSCHLTD	4.55%	9.48%	GTOFFSHORE	31.92%	46.73%	KOTAKBANK	46.92%	59.14%
BPCL	37.43%	38.76%	GVKPIL	37.27%	34.22%	KSOILS	72.73%	52.82%
BRFL	55.69%	64.85%	HCC	38.08%	29.48%	LICHSGFIN	33.47%	28.85%
CAIRN	54.96%	61.54%	HCLTECH	25.00%	30.65%	LITL	38.23%	41.82%
CANBK	34.76%	32.81%	HDFC	58.52%	55.98%	LT	31.28%	40.89%
CENTURYTEX	49.80%	49.44%	HDFCBANK	35.79%	38.29%	LUPIN	33.86%	29.28%
CESC	17.84%	12.20%	HDIL	30.69%	28.91%	M&M	62.36%	55.82%
CHAMBLFERT	39.99%	38.78%	HEROHONDA	59.73%	58.29%	MARUTI	57.58%	56.15%
CHENNPETRO	56.08%	39.50%	HINDALCO	33.25%	38.16%	MCDOWELL-N	33.79%	32.29%



Rollover Analysis								
SYMBOL	Rollover	3M AVG	SYMBOL	Rollover	3M AVG	SYMBOL	Rollover	3M AVG
MCLEODRUSS	65.41%	N/A	POWERGRID	59.71%	59.85%	TATACOMM	41.11%	26.84%
MLL	39.34%	34.41%	PRAJIND	41.76%	36.39%	TATAMOTORS	45.27%	45.14%
MOSERBAER	35.59%	35.19%	PTC	37.26%	37.29%	TATAPOWER	56.46%	57.92%
MPHASIS	10.51%	37.56%	PUNJLLOYD	52.01%	38.89%	TATASTEEL	37.38%	50.65%
MRPL	39.82%	39.13%	RANBAXY	32.67%	37.69%	TATATEA	24.97%	37.13%
MTNL	51.24%	46.63%	RCOM	50.44%	47.35%	TCS	32.47%	35.50%
MUNDRAPORT	52.67%		RECLTD	92.66%	33.60%	TECHM	20.68%	32.16%
NAGARCONST	42.78%	36.88%	RELCAPITAL	52.91%	52.22%	TITAN	12.35%	18.74%
NAGARFERT	41.82%	43.94%	RELIANCE	42.86%	42.27%	TRIVENI	50.58%	42.58%
NATIONALUM	57.70%	55.20%	RELINFRA	56.15%	48.22%	TTML	40.18%	46.15%
NEYVELILIG	29.01%	33.06%	RENUKA	48.11%	43.30%	TULIP	22.57%	25.40%
NOIDATOLL	33.51%	36.01%	RNRL	42.64%	38.64%	TV-18	38.04%	38.71%
NTPC	52.69%	55.41%	ROLTA	30.30%	33.51%	UCOBANK	30.16%	38.21%
OFSS	31.60%	36.43%	RPOWER	62.16%	62.65%	ULTRACEMCO	73.04%	63.72%
ONGC	32.48%	37.88%	SAIL	30.37%	35.82%	UNIONBANK	44.03%	47.10%
ONMOBILE	56.82%	N/A	SBIN	31.07%	48.28%	UNIPHOS	34.60%	37.74%
OPTOCIRCUI	35.71%	32.86%	SCI	27.00%	24.27%	UNITECH	38.96%	36.32%
ORCHIDCHEM	36.98%	31.86%	SESAGOA	47.51%	48.39%	VIDEOIND	83.25%	N/A
ORIENTBANK	26.14%	24.08%	SIEMENS	24.21%	32.06%	VIJAYABANK	31.77%	38.50%
PANTALOONR	56.91%	43.44%	SINTEX	41.61%	36.72%	VOLTAS	22.41%	30.39%
PATELENG	15.58%	23.65%	STER	42.75%	43.55%	WELGUJ	59.40%	42.47%
PATNI	35.90%	25.13%	STERLINBIO	22.25%	31.85%	WIPRO	43.60%	38.20%
PETRONET	36.45%	37.16%	SUNPHARMA	24.85%	28.22%	YESBANK	27.78%	27.66%
PFC	31.11%	29.13%	SUNTV	13.61%	20.63%	ZEEL	71.50%	44.12%
PIRHEALTH	47.24%	25.46%	SUZLON	43.14%	42.78%			
PNB	46.30%	53.26%	SYNDIBANK	32.63%	33.62%			
POLARIS	38.77%	36.06%	TATACHEM	24.94%	48.40%			

This Document has been prepared by Nirmal Bang Research (Nirmal Bang Securities Pvt Ltd). The information, analysis and estimates contained herein are based on Nirmal Bang Research assessment and have been obtained from sources believed to be reliable. This document is meant for the use of the intended recipient only. This document, at best, represents Nirmal Bang Research opinion and is meant for general information only. Nirmal Bang Research, its directors, officers or employees shall not in anyway be responsible for the contents stated herein. Nirmal Bang Research expressly disclaims any and all liabilities that may arise from information, errors or omissions in this connection. This document is not to be considered as an offer to sell, or a solicitation to buy any securities. Nirmal Bang Research, its affiliates and their employees may from time to time hold positions in securities referred to herein. Nirmal Bang Research or its affiliates may from time to time solicit from or perform investment banking or other services for any company mentioned in this document