

## Bullion Technical Outlook

### Gold



### Commentary

Gold price traded firm throughout the day holding the 18650 levels. We can buy gold on decline, 18550 to 18650 are good levels to enter long. Gold can test the highs of 18900.

### Levels for the day

	Month	S3	S2	S1	R1	R2	R3
<b>Gold</b>	<b>Oct</b>	18440	18525	18650	18750	18860	18950

### Silver



### Commentary

Silver yesterday made a breakout above 29200. We can buy silver on decline between 29180 – 29300. the counter looks good to head till 29650-29850.

### Levels for the day

	Month	S3	S2	S1	R1	R2	R3
<b>Silver</b>	<b>Sep</b>	29000	29180	29300	29600	29750	29900

## Base Metals Technical Outlook

### Copper



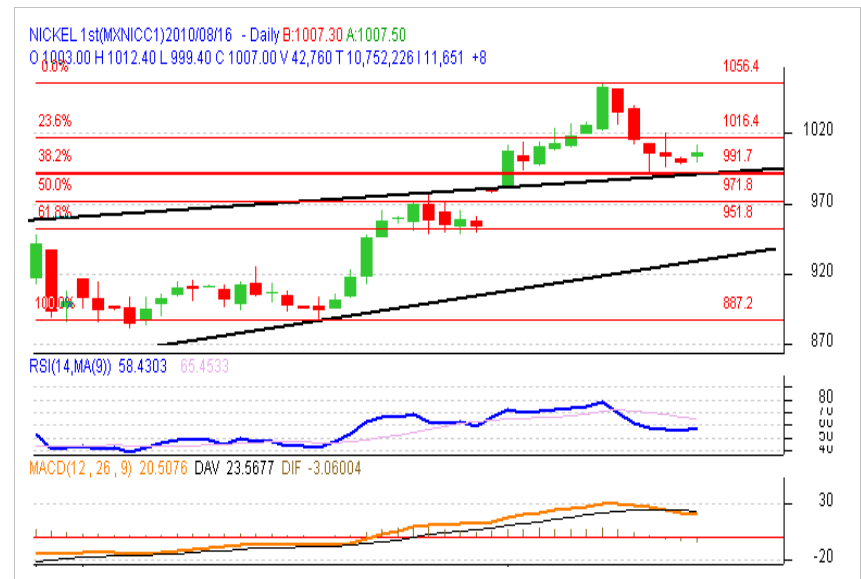
#### Commentary

Copper prices are trading range bound from 335 to 342. break above 342 will head the counter towards 345-346.

#### Levels for the day

	Month	S3	S2	S1	R1	R2	R3
<b>Copper</b>	<b>Aug</b>	332	335	337	340	342	345

### Nickel



#### Commentary

Nickel too like copper moving in the range 990 to 1021. One can book partial profit around 1020 levels.

#### Levels for the day

	Month	S3	S2	S1	R1	R2	R3
<b>Nickel</b>	<b>Aug</b>	970	990	1000	1012	1024	1035

## Base Metals Technical Outlook

### Aluminum



### Commentary

Aluminium price have fairly declined. One can buy the counter on decline around 97.5 – 98.3.

### Levels for the day

	Month	S3	S2	S1	R1	R2	R3
<b>Aluminum</b>	Aug	96	97.2	98.3	99.3	100.3	101.5
<b>Zinc</b>	Aug	93	94.3	95.7	97.15	98.2	99.5
<b>Lead</b>	Aug	93.5	94.7	95.9	97.5	99	100.5

## Energy Technical Outlook

### Crude Oil



### Commentary

Crude oil charts suggesting a break down from the channel. 3550 – 3580 are good levels to sell. The counter is likely to touch 3480 - 3450

### Levels for the day

	Month	S3	S2	S1	R1	R2	R3
<b>Crude Oil</b>	Aug	3440	3480	3505	3535	3560	3600
<b>Natural Gas</b>	Aug	188	192	195	199	202	205

## Top Pre-Market Trading Strategy for the day

Commodity	Contract	Strategy	Rate	Target 1	Target 2	Target 3	Stop-Loss
<b>Crude</b>	<b>Aug</b>	Sell	3560 -3580	3510	3480	-	3600
<b>Silver</b>	<b>Sept</b>	Buy	29200-29300	29600	29800	-	29000
<b>Gold</b>	<b>Oct</b>	Buy	18550-18650	18800		-	18450

**Devidas Rajadhikary**, Technical Analyst-Commodities; e-mail id: [devidas.rajadhikary@nirmalbang.com](mailto:devidas.rajadhikary@nirmalbang.com); Phone: 30271519.

### Disclaimer

This Document has been prepared by Nirmal Bang Research (A Division of Nirmal Bang Securities PVT LTD). The information, analysis and estimates contained herein are based on Nirmal Bang Research assessment and have been obtained from sources believed to be reliable. This document is meant for the use of the intended recipient only. This document, at best, represents Nirmal Bang Research opinion and is meant for general information only. Nirmal Bang Research, its directors, officers or employees shall not in anyway be responsible for the contents stated herein. Nirmal Bang Research expressly disclaims any and all liabilities that may arise from information, errors or omissions in this connection. This document is not to be considered as an offer to sell or a solicitation to buy any securities. Nirmal Bang Research, its affiliates and their employees may from time to time hold positions in securities referred to herein. Nirmal Bang Research or its affiliates may from time to time solicit from or perform investment banking or other services for any company mentioned in this document.

### About Nirmal Bang

Founded in 1986 by Shri Nirmal Bang, the Nirmal bang Group is recognized as one of the largest retail broking houses in India, providing an array of financial products and services. Our retail and institutional clients have access to products such as equities, derivatives, commodities, currency derivatives, mutual funds, IPOs, insurance, depository services and PMS. Throughout our history, we have fostered one overriding purpose – to provide each client with personal service and quality of work. By adhering to this principle, we have grown to become a successful and well-respected firm of highly qualified professionals.

The Group is headed by Mr. Dilip Bang and Mr. Kishore Bang who bring forward industry expertise, insight and most importantly, create an environment of unmatched commitment to clients.

We are registered members of the Bombay Stock Exchange Limited (BSE), National Stock Exchange of India Limited (NSE), Multi Commodity Exchange of India Limited (MCX), National Commodity & Derivatives Exchange Limited (NCDEX), National Multi Commodity Exchange of India Limited (NMCE) and MCX Stock Exchange Limited and are also depository participants of NSDL and CDSL.